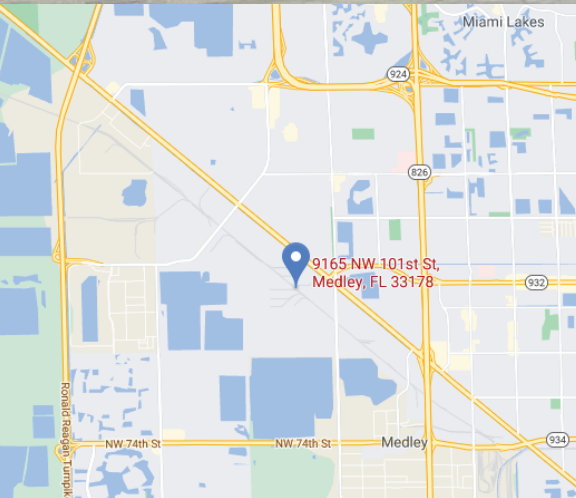




WAREHOUSE FOR SUBLEASE - 15,000 SF



PROPERTY FEATURES

- 15,000 SF total
- 3 dock high doors & 1 concrete ramp
- +/- 1,100 SF of offices
- 22' ceiling height
- Twin-T concrete roof
- Fire-sprinkled building
- Outside Wellfield Area
- 3-phase power - 480 V / 250 amps
- Lease expires July 31, 2023

For more information contact:

Elias G. Patsalos, CCIM

Phone: 305-804-9154

Email: elias@agorare.com

Michal Bibr

Phone: 305-458-4140

Email: michal@agorare.com

LEASE RATE

\$9.60 PSF

Agora Real Estate Group

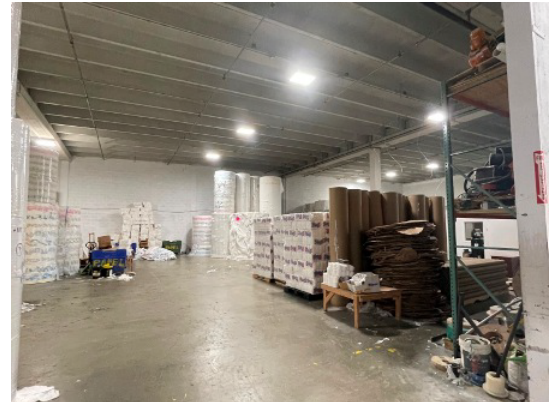
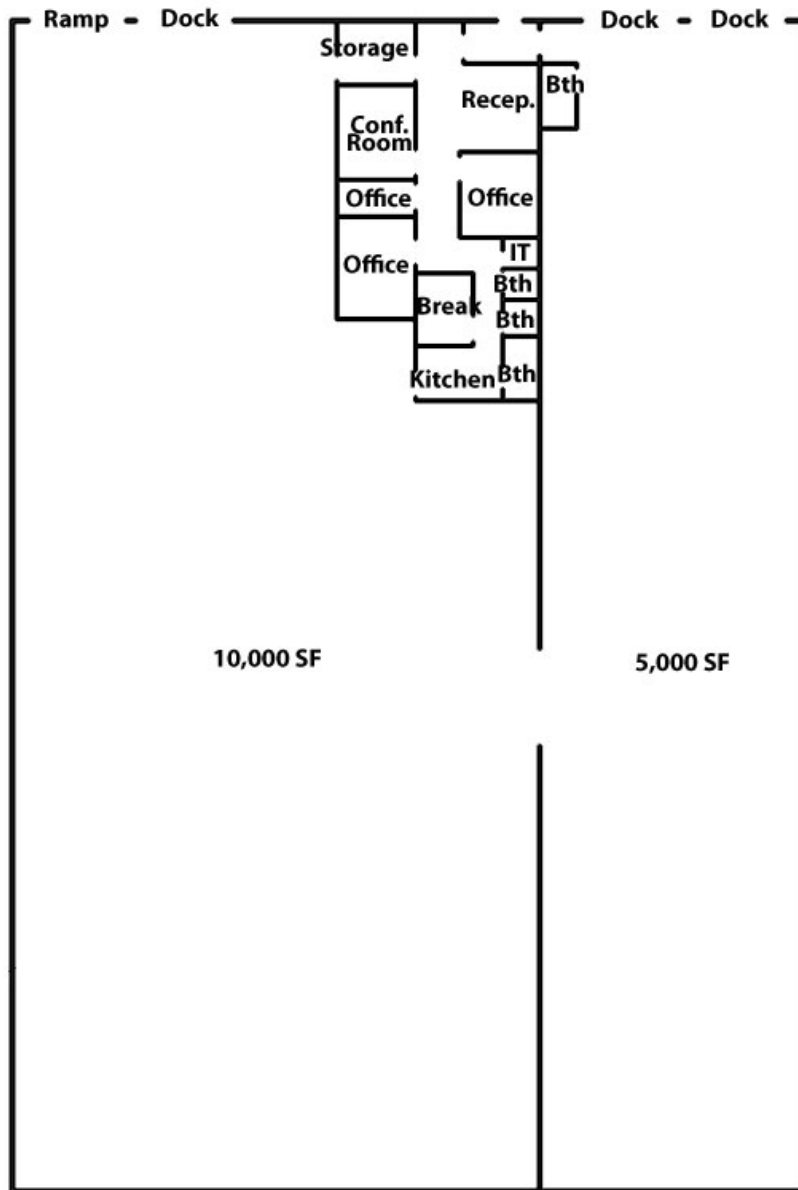
7500 NW 25th Street, Suite 237, Doral, FL 33122

P: +1 (305) 804-9154 | F: +1 (866) 708-2763 | E: info@agorare.com

No warranty or representation, expressed or implied, is made as to the accuracy of the information contained herein, and same is submitted subject to errors and omissions.



FLOOR PLAN & PHOTOS



Agora Real Estate Group

7500 NW 25th Street, Suite 237, Doral, FL 33122

P: +1 (305) 804-9154 | **F:** +1 (866) 708-2763 | **E:** info@agorare.com

No warranty or representation, expressed or implied, is made as to the accuracy of the information contained herein, and same is submitted subject to errors and omissions.