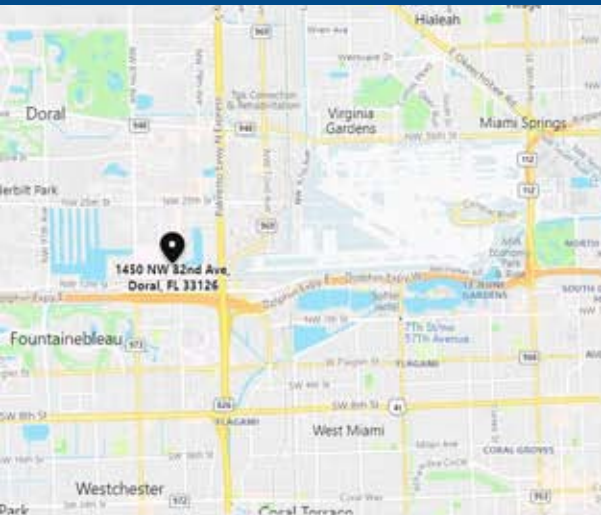




## WAREHOUSE SPACE FOR SUBLEASE - 5,400 SF



### PROPERTY FEATURES

- MICC location
- +/- 5,400 total sq.ft. available
- +/- 1,650 sq.ft. of offices
- 5 private offices
- Kitchenette
- 2 bathrooms
- 1 dock + 1 ramp
- 20-ft clear ceiling height
- Fire-sprinkled building
- Sublease through May 31, 2022

For more information  
contact:

**Elias G. Patsalos, CCIM**

Phone: 305-804-9154

Email: [elias@agorare.com](mailto:elias@agorare.com)

**Michal Bibr**

Phone: 305-458-4140

Email: [michal@agorare.com](mailto:michal@agorare.com)

### LEASE RATE

**\$11.70 PSF GROSS**

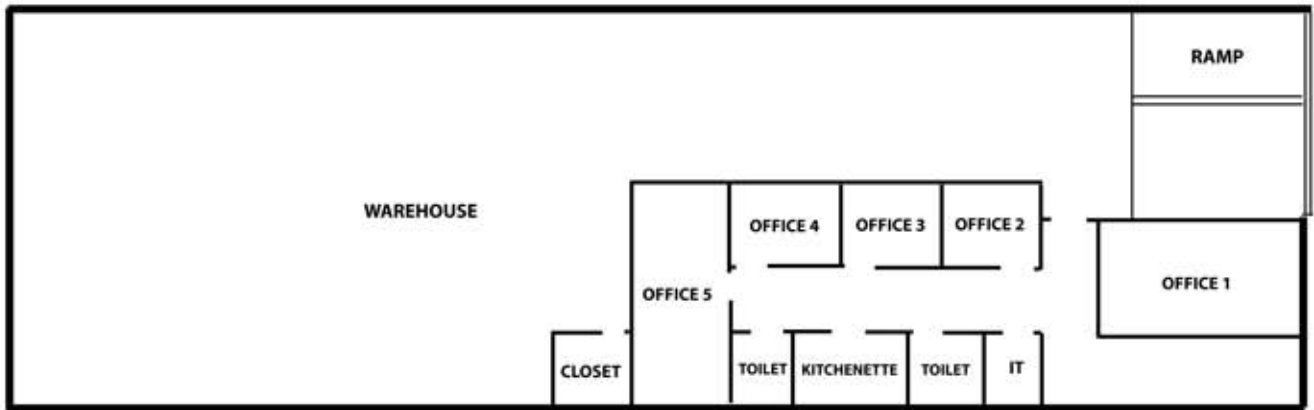
**Agora Real Estate Group**

7500 NW 25th Street, Suite 237, Doral, FL-33122

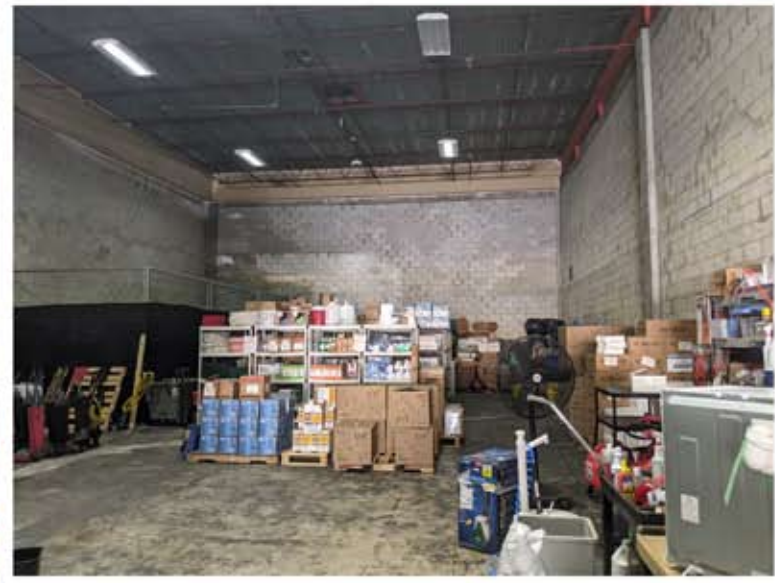
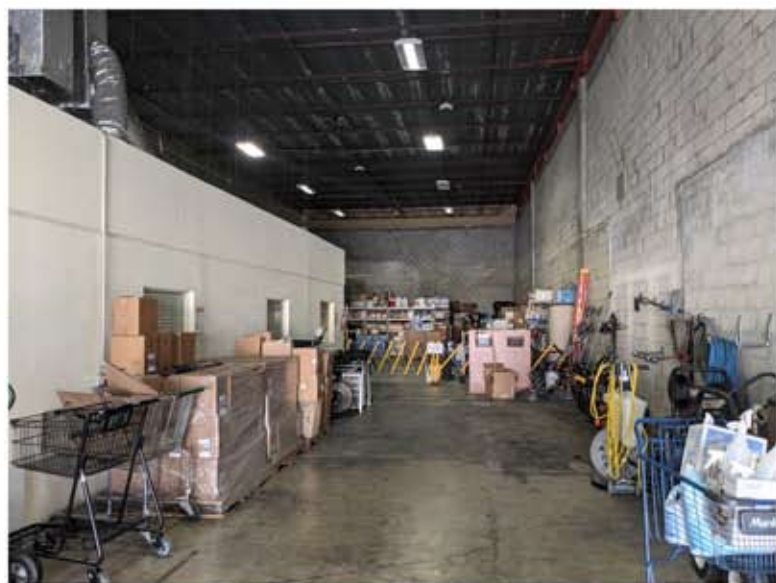
P: +1 (305) 804-9154 | F: +1 (866) 708-2763 | E: [info@agorare.com](mailto:info@agorare.com)

No warranty or representation, expressed or implied, is made as to the accuracy of the information contained herein,  
and same is submitted subject to errors and omissions.

# FLOORPLAN



# PROPERTY PHOTOS



## Agora Real Estate Group

7500 NW 25th Street, Suite 237, Doral, FL-33122

P: +1 (305) 804-9154 | F: +1 (866) 708-2763 | E: [info@agorare.com](mailto:info@agorare.com)

No warranty or representation, expressed or implied, is made as to the accuracy of the information contained herein, and same is submitted subject to errors and omissions.